



**Kingsbrook**

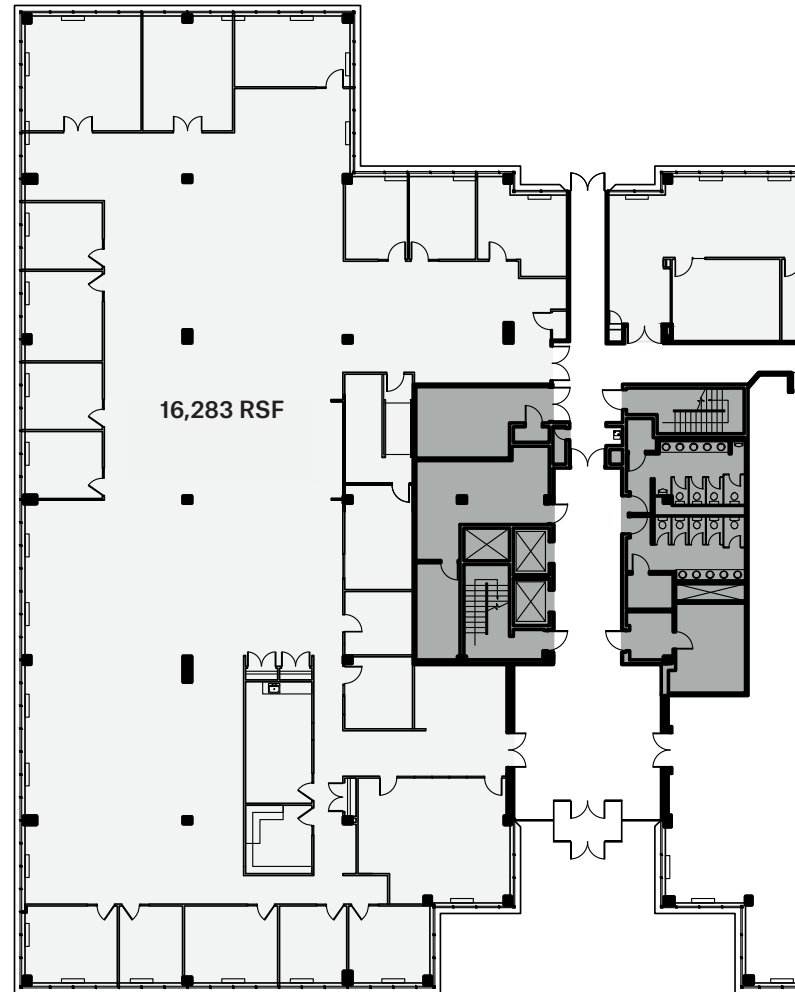
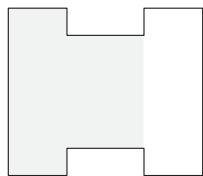
6 International Drive  
Rye Brook, NY

kingsbrookofficepark.com

## Partial 1st Floor 16,283 RSF

### Key Details

- Great Presence off Lobby with Double Door Entrance
- Landlord Will Demolish Existing Space and Provide Generous Work Allowance
- 11'6" Ceiling Height (Slab-to-Slab)
- Divisible



Leasing Agent  
**CBRE**

**Michael McCall**  
203 325 5321  
michael.mccall@cbre.com

 **GEORGE COMFORT & SONS, INC**  
Commercial Real Estate Since 1919

**DRA**  
ADVISORS